

PC-TIME MANAGER®

USER'S MANUAL

PC-Time Manager

PC-Time Manager	2
Overview	3
Getting Started.....	4
a – System Requirements.....	4
b – Installation.....	4
c – PC-Time Manager® Uninstallation	5
d - Creating Windows® Accounts	5
Using PC-Time Manager®.....	6
a - Changing the Password Settings.....	6
b - Changing the interface language	6
c – Setting Computer Schedules	7
d – Changing the User Notification Settings	9
License, Ordering and Support	10
a – License	10
b – Ordering Information	12
c – Support and Questions	13

Overview

Thank you for choosing PC-Time Manager® as your computer time scheduling tool.

PC-Time Manager® is a state of the art computer scheduling tool that allows you to set schedules for each Windows® user.

These are some of the main features of PC-Time Manager®:

- Set weekly computer schedules for each Windows® user separately.
- Remain Hidden and Undetected
- Set a computer preset action to perform according to a schedule.
- Separate Settings for each Windows® users
- Notify user with a custom message before performing action

Please note that PC-Time Manager® is a work in progress. [Visit our Web site](#) regularly to learn about updates, suggest features and inform us about problems you have encountered.

Getting Started

a – System Requirements

Component	Requirements
CPU	Pentium II 233 megahertz (MHZ) Preferably: Pentium III 450 megahertz (MHZ) or higher processor
Memory	64 megabytes (MB) of Random Access Memory (RAM) Preferably: 128 megabytes (MB) of Random Access Memory (RAM) or Higher
Hard Disk Space	1 MB of hard disk space required
Operating Systems	Microsoft® Windows® 2000 Professional, Server, Advanced Server, or Data Center Editions Microsoft® Windows® XP Professional or Home Edition Microsoft® Windows® 2003 Server Edition
	If running on Windows® 2000 Professional, Service Pack 3 or higher is required. If running on Windows® XP Professional, Service Pack 1 or higher is required.
Others	VGA or higher resolution monitor
	Keyboard and Mouse

b – Installation

It is imperative to install Microsoft .Net Framework 1.1 prior to installing PC-Time Manager®. The PC-Time Manager® setup file checks for the framework and informs you whether it is already installed. Otherwise, you will be instructed from where to download the Framework.

The Microsoft .Net Framework 1.1 is also used by a number of other applications created by Microsoft® and other software publishers; installing it is a beneficial addition to your system.

To install Microsoft .Net Framework 1.1 manually [click here](#)

To install PC-Time Manager®, double click the PCTimeManagerInstall.exe file and follow the wizard's instructions.

c – PC-Time Manager® Uninstallation

There are two ways to uninstall PC-Time Manager® should you wish to do so.

Control Panel

- Go to Control Panel → **Add/Remove Programs**
- Double click the **PCTimeManager** entry in the list of programs.

Start Menu

From the Start menu, click **Programs, VirtualLTD, CopDad 1.2** and then **Uninstall**.

Technical details

The "Uninstall PC-Time Manager®" procedure performs the following steps:

1. Verifies that it is safe to uninstall.
2. Uninstalls any CopDad add-ons
3. Deletes files in PCTimeManager folder if they were installed by this version of PC-Time Manager®
4. Removes the PC-Time Manager® entries from the registry.

Note: some files may not be deleted until you restart the computer.

d - Creating Windows® Accounts

As specified earlier, PC-Time Manager® enforces computer schedules **separately** for each Windows® user. In other words, in order to set different and separate PC-Time Manager® schedules for each computer user, you need to create a Windows® account for each one of these users

To create a new Windows® user's account:

- Go to Start → Control Panel → User Accounts
- Follow Microsoft® Windows® instructions.

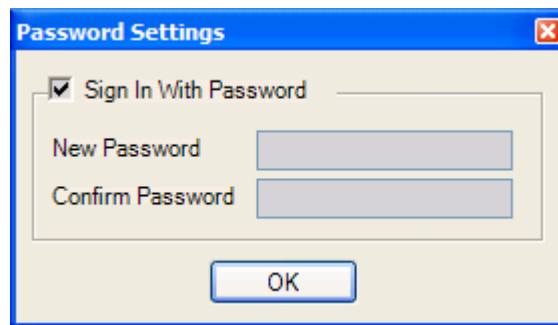
Using PC-Time Manager®

a - Changing the Password Settings

The PC-Time Manager® control panel is password protected (Password protection is disabled by default).

To enable password protection:

- Go to File → Password Settings.
- In the Password Settings window, check the “Sign In with password” checkbox to enable password usage. (Similarly, un-checking the “Sign In with password” checkbox disables password usage).



- Type the new password in the corresponding field then confirm it.
- Click *OK*.

Upon launching PC-Time Manager®, the signing in screen is launched enabling you to insert the correct password and start using the application.

b - Changing the interface language

PC-Time Manager® is a multi-lingual application. It is designed to support several languages. This version of PC-Time Manager® currently supports two languages: English and French.

Upon changing the language, all text in the PC-Time Manager® control panel will change into the selected language.

To change the language:

- Go to Language.
- Select the language you wish to use.

c – Setting Computer Schedules

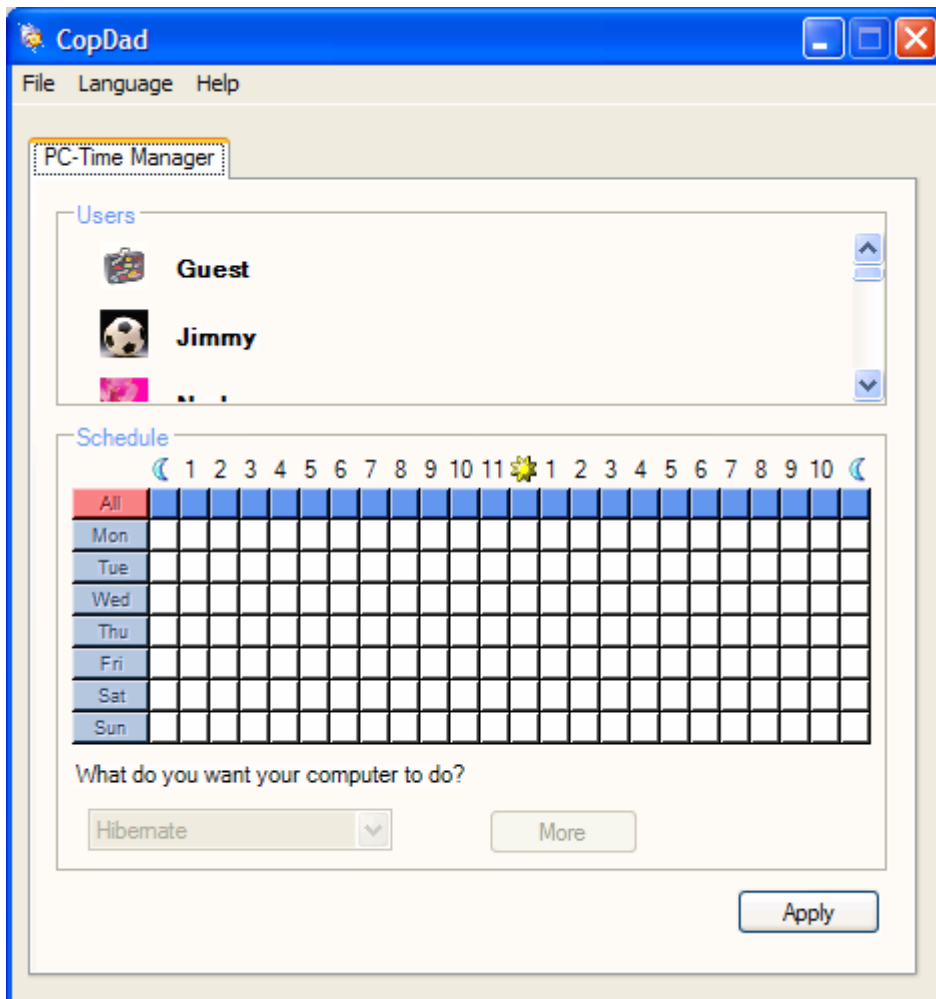
When PC-Time Manager® is launched, the main window appears, listing the Windows® accounts already created on the system. By default, each Windows® user is able to use the computer at all times: this is reflected by the un-selected buttons (squares) in the schedule panel.

Each button inside the schedule panel represents an hour in a week day.

The *All* button toggles all days/hours of the week.

Each week day button (first column to the left) toggles the 24 hours of that day.

Each hour button (first row on top) toggles the selected hour for each day of the week.



To set a user's computer schedule:

- Select the user from the users list.
- From the drop down list, select the preset action to be performed once the schedule is active (Hibernate, Logoff, Shutdown, Standby).*
- Click *Apply*.

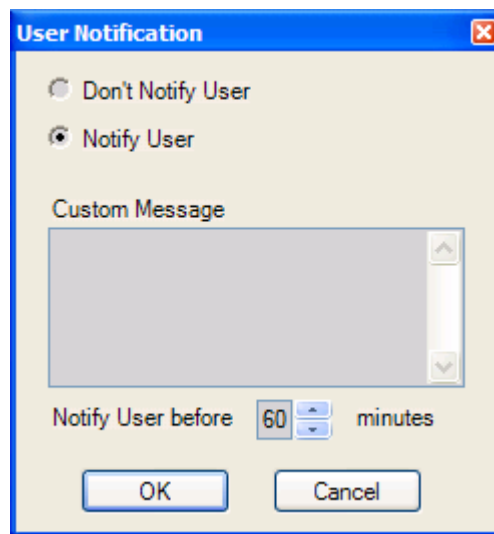
* The schedule set for each user will be enforced the next time he or she logs on to Windows®. In case the user that's logged on changes his own schedule, the schedule will be instantaneously enforced.

d – Changing the User Notification Settings

PC-Time Manager® is equipped with a system that enables you to notify the user whose schedule is being enforced before a preset action is being performed.

In order to change the user's notification settings:

- Select the user from the Windows® users list in the PC-Time Manager® Panel
- Click the *More* button



- Select the *Notify User* option.
- To set a custom notification message, type your text in the Custom Message box.
- Change the interval of time (in minutes) before which the user is notified by clicking on the up/down arrows.
- Type in the provided space the available time period to wait before the computer performs the preset action. You can also click the arrows to select the adequate interval in minutes.

Example: if this setting is set to 5, the user will be notified 5 minutes before the computer will be shut down by launching the Custom Message that is set.

License, Ordering and Support

a – License

PC-Time Manager® Copyright © 2005-2006 Virtual Software LTD.
All rights reserved.

This license applies to the standard-licensed version of PC-Time Manager®.

PC-Time Manager® License Virtual Software LTD

Your Agreement to this License

This License only applies to the English-language version of the PC-Time Manager® software and its accompanying files, data and materials ("PC-Time Manager®"). You should carefully read the following terms and conditions before using, installing, copying, or distributing this software. Unless you have a different license agreement signed by Virtual Software LTD ("VSL"), your use, installation, copying, or distribution of PC-Time Manager® indicates your acceptance of this agreement ("License").

If you do not agree to all of the terms and conditions of this License, then: (a) do not use, install, copy, or distribute any copy of PC-Time Manager® with which this License is included, and (b) in addition, if you paid VSL or an authorized VSL reseller for a package consisting of one or more copies of PC-Time Manager®, you may return the complete package unused, within thirty (30) days after purchase, for a full refund of the license fee.

The terms and conditions of this License describe the permitted use and user(s) of each Licensed Copy of PC-Time Manager®. For purposes of this License, if you have a valid single-copy license, you have the right to use a single "Licensed Copy" of PC-Time Manager®; if you or your organization have/has a valid multi-user license, then you or your organization have/has the right to use up to a number of "Licensed Copies" of PC-Time Manager® equal to the number of copies indicated in the documents issued by VSL when granting the license.

Scope of License

Each Licensed Copy of PC-Time Manager® may either be used by a single person who uses the software personally on one or more computers, or installed on a single workstation used non-simultaneously by multiple people, but not both. This is not a concurrent use license.

Each Licensed Copy may be accessed through a network, provided that you have purchased rights to use a Licensed Copy for each workstation that will access PC-Time Manager® through the network. For instance, if 8 different workstations will access PC-Time Manager® on the network, you must purchase rights to use 8 Licensed Copies of PC-Time Manager®, regardless of whether the 8 workstations will access PC-Time Manager® at different times, or concurrently.

All rights of any kind in PC-Time Manager® which are not expressly granted in this License are entirely and exclusively reserved to and by VSL. PC-Time Manager® is protected by the United States copyright laws and other applicable laws and treaties. You may use, install and distribute PC-Time Manager® solely as expressly provided in this License. You may not rent, lease, loan, sublicense, modify, translate, reverse engineer, decompile, disassemble, or create derivative works based on, PC-Time Manager® , nor permit anyone else to do so. You may not make access to PC-Time Manager® available to others in connection with a service bureau, application service provider, or similar business, nor permit anyone else to do so.

Warranty Disclaimers and Liability Limitations

PC-Time Manager®, and any and all accompanying software, files, data and materials, are distributed and provided "AS IS" and with no warranties of any kind, whether express or implied, including, without limitation, any warranty of merchantability or fitness for a particular purpose. VSL does not warrant, guarantee, or make any representations regarding the use of, or the results of the use of, PC-Time Manager®. VSL does not warrant that the operation of PC-Time Manager® will be uninterrupted or error-free. You acknowledge that good data processing procedure dictates that any program, including PC-Time Manager®, must be thoroughly tested with non-critical data before there is any reliance on it, and you hereby assume the entire risk of all use of the copies of PC-Time Manager® covered by this License. This disclaimer of warranty constitutes an essential part of this License.

Except to the extent expressly prohibited by applicable statutes, VSL shall not be liable for any damage or financial loss arising out of the use of, or inability to use, PC-Time Manager® . Any liability of VSL will be limited exclusively to refund of the license fee paid to VSL. Except to the extent expressly prohibited by applicable statutes, in no event shall VSL, or its principals, shareholders, officers, employees, affiliates, contractors, subsidiaries, or parent organizations, be liable for any indirect, incidental, consequential, special, or punitive damages whatsoever relating to the use of PC-Time Manager® , or to your relationship with VSL, (including, without limitation, loss or disclosure of data or information, loss of profit, revenue, business opportunity or business advantage, or business interruption), whether based upon a claim or action of contract, warranty, negligence, strict liability, contribution, indemnity, or any other legal theory or cause of action, even if advised of the possibility of such damages.

In addition, in no event does VSL authorize you or anyone else to use PC-Time Manager® in applications or systems where PC-Time Manager® 's failure to perform can reasonably be expected to result in a significant physical injury, or in loss of property, or in loss of life. Any such use is entirely at your own risk, and you agree to hold VSL harmless from any and all claims or losses relating to such unauthorized use.

Restricted Rights

PC-Time Manager® shall not be used by You to transfer the Data to either a foreign national or a foreign destination in violation of any applicable law, including (without limitation) the Export Laws.

The Licensed Software under this License Agreement is commercial computer software as that term is described in 48 C.F.R. 252.227-7014(a)(1). If acquired by or on behalf of a civilian agency, the U.S. Government acquires this commercial computer software and/or commercial computer software documentation subject to the terms of this License Agreement as specified in 48 C.F.R. 12.212 (Computer Software) and 12.211 (Technical Data) of the Federal Acquisition Regulations (“FAR”) and its successors. If acquired by or on behalf of any agency within the Department of Defense (“DOD”), the U.S. Government acquires this commercial computer software and/or commercial computer software documentation subject to the terms of this License Agreement as specified in 48 C.F.R. 227.7202-3 of the DOD FAR Supplement (“DFAR”) and its successors.

General

This End User License will bind and inure to the benefit of each party’s successors and assigns, provided that You may not assign or transfer this End User License, in whole or in part, without VSL prior written Consent. This End User License shall be governed by and construed in accordance with the laws of the State of Florida, United States of America, as if performed wholly within the state and without giving effect to the principles of conflict of law. The parties agree that United Nations Convention on Contracts for the International Sale of Goods (1980) is specifically excluded from application to this License Agreement. No failure of either party to exercise or enforce any of its rights under this End User License will act as a waiver of such rights. If any portion hereof is found to be void or unenforceable, the remaining provisions of this End User License shall remain in full force and effect. This End User License is the complete and exclusive License Agreement between the parties with respect to the subject matter hereof, superseding and replacing any and all prior and/or simultaneous License Agreements, communications and understandings (both written and oral) regarding such subject matter.

This End User License shall also be applicable and fully enforceable outside of the United States of America and Canada and shall be strictly interpreted in accordance with local laws, rules, regulations and International treaties, where applicable.

b – Ordering Information

You need to register your copy of PC-Time Manager® online.

To register PC-Time Manager® [click here](#)

c – Support and Questions

Virtual Software LTD support team is well equipped to constantly respond to technical issues. Whether you need immediate access to the latest technical information or require assistance from one of our certified engineers, Virtual Software LTD support team will provide you with the optimal solution to all your technical needs.

Virtual Software LTD website

Visit Virtual Software LTD's Web site to check out additional products, services, and assistance: <http://www.virtualsoftwareltd.com>

Virtual Software LTD Online Technical Support

For additional assistance with the use of a Virtual Software LTD product, you may contact us via e-mail at support@virtualsoftwareltd.com

Or use our contact form that is found at <http://www.virtualsoftwareltd.com/feedback.htm>